



National Rural Support Programme

Date: Friday, June 19, 2026

EVALUATION SHEET FOR PROCUREMENT OF CHEMICAL REAGENTS & OTHER LABORATORY ITEMS (RQ-2545)

Suppliers Name				GROWTHQUEST ENTERPRISES		MASONS DISTRIBUTORS		KASHMIR PHARMACY (OPT-A)		KASHMIR PHARMACY (OPT-B)		ZEB & COMPANY		LAB CHEM	
Sr#	Description	UOM	QTY	Unit Price	Total Price	Unit Price	Total Price	Unit Price	Total Price	Unit Price	Total Price	Unit Price	Total Price	Unit Price	Total Price
1	MICROSCOPE GLASS SLIDE	Pack	2500	478	1,195,000	490	1,225,000	570	1,425,000	612	1,530,000	580	1,450,000	575	1,437,500
2	BLOOD LANCET	Pack	750	375	281,250	384	288,000	360	270,000	360	270,000	390	292,500	468	351,000
3	ALCOHOL SWABS	Pack	750	370	277,500	354	265,500	280	210,000	280	210,000	390	292,500	432	324,000
4	GIEMSA STAIN	Bottle	55	17,400	957,000	17,995	989,725	21,124	1,161,820	21,124	1,161,820	17,000	935,000	28,900	1,589,500
5	OIL IMMERSION	Bottle	40	2,700	108,000	1,994	79,760	1,750	70,000	1,750	70,000	2,700	108,000	5,500	220,000
6	DISTILLED WATER	Bottle	800	430	344,000	443	354,400	210	168,000	210	168,000	400	320,000	720	576,000
7	METHANOL	Bottle	25	3,200	80,000	3,068	76,700	1,400	35,000	1,400	35,000	2,680	67,000	4,150	103,750
8	TISSUE ROLL	Each	600	145	87,000	142	85,200	120	72,000	120	72,000	130	78,000	280	168,000
9	COTTON WOOL	Each	250	380	95,000	472	118,000	360	90,000	360	90,000	400	100,000	580	145,000
10	LENSE CLEANSING TISSUE	Pack	30	850	25,500	826	24,780	960	28,800	960	28,800	600	18,000	690	20,700
11	TIMER WATCH / STOP WATCH	Each	30	1,300	39,000	1,357	40,710	950	28,500	950	28,500	1,100	33,000	750	22,500
12	DISPOSABLE POLYTHENE GLOVES	Pack	2000	67	134,000	65	130,000	65	130,000	65	130,000	75	150,000	1,600	3,200,000
13	SLIDES STORAGE BOX	Each	30	2,200	66,000	2,065	61,950	1,250	37,500	1,250	37,500	1,500	45,000	850	25,500
14	SOAPS	Each	600	140	84,000	142	85,200	150	90,000	150	90,000	175	105,000	230	138,000
Transportation Cost				Included		Included		Included		Included		200,000		Included	
GRAND TOTAL				3,773,250.00		3,824,925.00		3,816,620.00		3,921,620.00		4,194,000.00		8,321,450.00	
Selected Items Total				495,500.00		1,066,425.00		2,201,300.00							
Selected Items Grand Total				3,763,225.00											
2% Bid Security				75,465.00		76,498.50		76,332.40		78,432.40		83,880.00		166,429.00	
Bid Security Submitted				76,000.00		76,500.00		80,000.00		80,000.00		85,000.00		170,000.00	
DELIVERY TIME				Within 3 Weeks		Within 15 Working Days		14 Working Days		14 Working Days		Within 15 Working Days		Not Mentioned	

Recommendations:

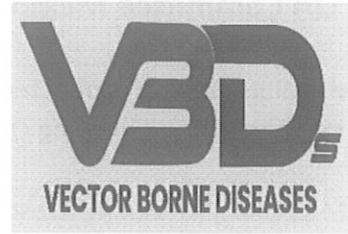
- 1 Samples were inspected / tested and reports of each item/supplier is attached.
- 2 Based of inspection / testing and offered price, purchase item# 1, 2, 5, 6, 8, 10, 12 & 13 from M/s Kashmir Pharmacy (Opt-A), item# 3, 9, 11 & 14 from M/s Growthquest Enterprises and item# 4 & 7 from M/s Masons Distributors.

Date:

Friday, June 19, 2026

SAMPLE EVALUATION OF CHEMICAL REAGENTS & LABORATORY ITEMS (RQ-2545)

SUPPLIERS NAME				Growhquest Enterprises		Masons Distributors		KASHMIR PHARMACY (Opt-A)		KASHMIR PHARMACY (Opt-B)	
Sr#	Description	Typical Packing	UOM	Description of Offered Items	Remarks	Description of Offered Items	Remarks	Description of Offered Items	Remarks	Description of Offered Items	Remarks
1	MICROSCOPE GLASS SLIDE Pre-cleaned, 75mm x 25mm X 1.0mm 1.2mm thick, frosted/painted end	72/Pack	Pack	MD CAT No. 7105, 75 Pcs/Pack	Slides are blurred and of low quality, Not Approved	MD CAT No. 7105, 75 Pcs/Pack	Thick Glass Slides, blurred and of low quality, Not Approved	CMC MED ESPANIOL CAT No 7105, 72 Pcs/Pack	Good Quality, Approved	CITO MED B107-1011 Double Frosted 50Pcs/Pack	Thick Glass Slides, blurred and of low quality, Not Approved
2	BLOOD LANCET Fine gauge, plastic stem and cover, tri-bevel tip, disposable, sterile,	200/Pack	Pack	Lifecare Plus (200/Pack)	Approved	Safety (200/Pack)	Low quality material, Not Approved	Lifecare Plus (200/Pack)	Approved	Lifecare Plus (200/Pack)	Approved
3	ALCOHOL SWABS Swabs (saturated with 70% IPA)	200/Pack	Pack	Lifeline Alcohol Swabs (200/Pack)	Approved	Star Alcohol Swabs (200/Pack)	Dry Swabs, Low Quality, Not Approved	Safety Alcohol Swabs (200/Pack)	Small in size, low quality, Not Approved	Safety Alcohol Swabs (200/Pack)	Small in size, low quality, Not Approved
4	GIEMSA STAIN Sigma-Aldrich Germany only Original Packing, 1 Liter Bottle. Having expiry at least one year. (Certificate of Analysis (COA) to be attached with the quote)	1 Litre	Bottle	Sigma Aldrich (HX56654104) Exp: 29-02-2028	As Per VBD Lab Report it is not accepted due to did not meet the criteria of WHO. Not Approved	Sigma Aldrich (HX56654104) Exp: 29-02-2028	As Per VBD Lab Report it is accepted due to meet the standard criteria of WHO. Approved	Sigma Aldrich (HX21075104) Exp: 29-02-2028	As Per VBD Lab Report it is accepted due to meet the standard criteria of WHO. Approved	Sigma Aldrich (HX21075104) Exp: 29-02-2028	As Per VBD Lab Report it is accepted due to meet the standard criteria of WHO. Approved
5	OIL IMMERSION 500 ml/Bottle, Original Packing, Merck, VWRE, BDH, Sigma or equal (Certificate of Analysis (COA) to be attached with the quote)	500ml	Bottle	Sigma Aldrich (BCCL6601) Exp: 31-03-2027	As Per VBD Lab Report it is accepted due to meet the standard criteria of WHO. Approved	Sigma Aldrich (BCCL6601) Exp: 31-03-2027	As Per VBD Lab Report it is accepted due to meet the standard criteria of WHO. Approved	Sigma Aldrich (MKCZ4505) Exp: 31-08-2030	As Per VBD Lab Report it is accepted due to meet the standard criteria of WHO. Approved	Sigma Aldrich (MKCZ4505) Exp: 31-08-2030	As Per VBD Lab Report it is accepted due to meet the standard criteria of WHO. Approved
6	DISTILLED WATER, low electrical conductivity (typically $\lt; 2\text{ }\mu\text{S/cm}$)), a total dissolved solids (TDS) count of less than $\lt; 10\text{ mg/L}$)), and a pH range of approximately $\lt; 5.4\text{--}6.6$) due to dissolved carbon dioxide	6 Liter	Bottle	Secure Distilled Water (6 Litre)	Approved	Labcare Distilled Water (6 Litre)	Approved	Labcare Distilled Water (6 Litre)	Approved	Labcare Distilled Water (6 Litre)	Approved
7	METHANOL Original Packing, Merck, BDH, Sigma or equal	2.5 Litre	Bottle	Sigma Aldrich (SHBS7468) Exp: 31-10-2028	As Per VBD Lab Report it is accepted due to meet the standard criteria of WHO. Approved	Sigma Aldrich (SHBS7468) Exp: 30-04-2030	As Per VBD Lab Report it is accepted due to meet the standard criteria of WHO. Approved	Sigma Aldrich (SHBR6023) Exp: Not Available	As Per VBD Lab Report it is accepted due to meet the standard criteria of WHO. Not Recommended	Sigma Aldrich (SHBR6023) Exp: Not Available	As Per VBD Lab Report it is accepted due to meet the standard criteria of WHO. Not Recommended
8	TISSUE ROLL 4.5 inches wide and 4 inches in diameter approx. with about 500 sheets per toilet roll. Color White, Good Quality, Rose Petal or equal.	500 Sheets/Roll	Roll	Rose Petal Maxob	Approved	Royal Touch Tissue Roll	Rough Tissue, Low Quality, Not Approved	Rose Petal Maxob	Approved	Rose Petal Maxob	Approved
9	COTTON WOOL none sterilize, made of 100% pure white cotton, hydrogen-bleached, high absorbency, and free from impurities like seeds and leaves.	400 Gram	Each	Crescent Cotton Wool 400gm	Approved	Ashraf Cotton Wool	Cotton material is low quality, Not Approved	Hospitex Cotton Wool 400gm	Cotton material is low quality, Not Approved	Hospitex Cotton Wool 400gm	Cotton material is low quality, Not Approved
10	LENSE CLEANSING TISSUE Whatman UK Original, Cat No. 2105 841	25 Sheet / Pack	Pack	WHATMAN CAT No 2105 841	Sheets are plain and of low quality, (Copy) Not Approved	WHATMAN CAT No 2105 841	Sheets are plain and of low quality, (Copy) Not Approved	WHATMAN Schleicher Schuell CAT No 2105 841	Sheet quality is good. Approved	WHATMAN Schleicher Schuell CAT No 2105 841	Sheet quality is good. Approved
11	TIMER WATCH / STOP WATCH Digital hand held with neck strap. Start/stop/lap push buttons on top left and right, KX-5898 or equal		Each	Professional Quartz Timer XL5898 with neck strap.	Good Quality, Approved	Professional Quartz Timer XL5898 with neck strap.	Good Quality, Approved	Bigscreen Show 332 Stop Watch	Without Neck Strap. Not Approved	Bigscreen Show 332 Stop Watch	Without Neck Strap. Not Approved
12	DISPOSABLE POLYTHENE GLOVES made from LDPE or HDPE, latex free & transparent, Good Quality, Safety or Equal	100Pcs / Pack	Pack	Lifecare Disposable Gloves 100Pcs/Pack	Good Quality, Approved	Hygiene Pro Disposable Gloves	Low quality material, Not Approved	Lifecare Disposable Gloves 100Pcs/Pack	Good Quality, Approved	Lifecare Disposable Gloves 100Pcs/Pack	Good Quality, Approved
13	SLIDES STORAGE BOX (Box plastic having capacity of 100 slides)	100 Slides / Box	Each	Local Plastic Storage Box	Without Protection Foam. Not Approved	Local Plastic Storage Box	Without Protection Foam. Not Approved	Local Plastic Storage Box	With Protection Foam. Approved	Local Plastic Storage Box	With Protection Foam. Approved
14	SOAPS Dettol, Safeguard or equal	+/- 100gm	Each	Safeguard 125gm	Good Quality, Approved	Dettol Skincare 111gm	Good Quality, Approved	Dettol 111gm	Good Quality, Approved	Dettol 111gm	Good Quality, Approved



**Pre-Quality Assurance Report of Giemsa Stain, Methanol and
Immersion Oil for Malaria Diagnosis**

**Report Prepared by: Urooj Afreen
Acting Quality Assurance Officer
VBDs DGHS, Sindh**

1- QA Committee Members:

The evaluation was conducted to ensure the quality of lab reagents (Giemsa stain, Methanol and Immersion oil) by following QA team members of Sindh Reference Lab.

- a- Miss Urooj Afreen (Microscopist & Acting QA Officer – GFATM Sindh)
- b- Mr. Sultan (Senior Microscopist –VBDs Sindh)

2- Background:

Malaria diagnosis through microscopy remains the gold standard and the quality of the lab reagents affects the accuracy and reliability of diagnosis. As a part Sindh Reference Laboratory (VBD-Sindh) has received Lab reagents on **16th June 2026** from private SR-National Rural support Program (NRSP) for Quality Assurance.

The detail list of received items from private SR- NRSP are given below.

#	Item	Manufacturer	Sample Marking	Batch/Lot No.	Expiry Date	Quantity
1	Giemsa Stain	Sigma-Aldrich	Masons	HX56654104	29-02-2028	01 bottle (1000 ml)
2	Immersion Oil	Sigma-Aldrich	Masons	BCCL6601	31-03-2027	01 bottle (500 ml)
3	Methanol	Sigma-Aldrich	Masons	SHBS7468	30-04-2030	01 bottle (2.5 L)
4	Giemsa Stain	Sigma-Aldrich	Growth Quest	HX56654104	29-02-2028	01 bottle (1000 ml)
5	Immersion Oil	Sigma-Aldrich	Growth Quest	BCCL6601	31-03-2027	01 bottle (500 ml)
6	Methanol	Sigma-Aldrich	Growth Quest	SHBS7468	30-04-2030	01 bottle (2.5 L)
7	Giemsa Stain	Sigma-Aldrich	Kashmir	HX56654104	29-02-2028	01 bottle (1000 ml)
8	Immersion Oil	Sigma-Aldrich	Kashmir	MKCZ4505	31-08-2030	01 bottle (500 ml)
9	Methanol	Sigma-Aldrich	Kashmir	SHBR6023	N/A	01 bottle (2.5 L)

3- Visual Inspection:

All bottles of received lab reagents (Giemsa, Methanol and Oil Immersion) were sealed pack, not found any damaged and expire items.

4- Proceeding of Quality Assurance of Lab Reagents.

- Quality Assurance team collected positive blood samples from district Jamshoro and negative blood samples from district Hyderabad for quality assurance of Lab items.
- Prepared total 60 slides from positive and negative blood samples.
- QA team prepare total 30 slides (15 positive and 15 negative slides) to evaluate the quality of all batches of Giemsa stain QA team stained 05 positive and 05 negative slides from each batch /lot of Giemsa stain) through **Regular method** according to recommended **timings 30-45 minutes**.
- QA team prepare total 30 slides (15 positive and 15 negative slides) to evaluate the quality of all batches of Giemsa stain. QA Team stained 05 positive and 05 negative slides from each batch/ lot of Giemsa stain through **rapid method** according to recommended **timings 7-10 minutes**.
- Thin smear of all prepared slides was fixed with 03 different batches of Methanol.
- All slides were examine through 03 different batches of Oil immersion.

i. Results of Giemsa Stain:

S. #	Manufacture	Batch #	Expiry	Findings /Results	Accepted / Not Accepted
1	Sigma-Aldric (Masons)	HX56654104	29-02-2028	<ul style="list-style-type: none">• It was physically observed that colour of stain was blue-violet, visually clear with no any particulate.• Upon examination, parasite visualization was clear. The cytoplasm stained blue and nucleus appeared red.• Red blood cells (RBCs) observed pale pink or greyish, maintaining their normal shape and size without hemolysis.• White blood cells (WBCs) observed blue to Purple.• It was observed that the background of the stained blood films was clean, free from	It is accepted due to meet the Standard criteria Of WHO.

				artifacts, and the slides were not overly stained.	
2	Sigma-Aldric (Growth quest)	HX56654104	29-02-2028	<ul style="list-style-type: none"> • It was physically observed that colour of stain was dark blue-violet, visually clear with no any particulate. • Upon examination, parasite visualization wasn't clear. The cytoplasm were over stained blue and nucleus appeared purple • Red blood cells (RBCs) observed dark purple or greyish. • White blood cells (WBCs) observed blue to purple. • It was observed that the background of the stained blood films was over and free from artifacts. and the slides were overly stained 	It is not accepted due to did not meet the Standard criteria Of WHO.
3	Sigma-Aldric (Kashmir Ph)	HX21075104	29-02-2028	<ul style="list-style-type: none"> • It was physically observed that colour of stain was blue-violet, visually clear with n any particulate. • Upon examination, parasite visualization was clear. The cytoplasm stained blue and nucleus appeared red. • Red blood cells (RBCs) observed pale pink or greyish, maintaining their normal shape and size without hemolysis. • White blood cells (WBCs) observed blue to purple. • It was observed that the background of the stained blood films was clean and free from artefacts, and the slides were not overly stained. 	It is accepted due to meet the Standard criteria Of WHO. Also Recommended

Recommendations for Giemsa stain in Malaria Microscopy:

- Always use freshly prepared working solution, its essential for accurate visualization of malaria parasites.
- Giemsa stain should be placed at dark and cool place.

- To ensure optimal staining quality and consistent parasite visualization, buffer water with pH of 7.2 must be used for Giemsa stain preparation, as recommended by WHO.
- Recommended time and stain concentration is essential for clear visualization of malaria parasites

ii. Results of Methanol:

S.#	Manufacturer	Batch #	Expiry	Results/Findings	Accepted/ Not Accepted
1	Sigma-Aldrich (Masons)	SHBS7468	30-04-2030	<ul style="list-style-type: none"> • The physical appearance of this batch was clear and colorless, no unusual smell and particles were found. • The purity of this batch is $\geq 99.8\%$ (GC), the Quantity of water is (0.1%) serves an important fixative function • During microscopy, all stages of parasites were clearly visible. Lysis of red blood cells was not seen, as well as parasitic morphology was well preserved. 	Accepted
2	Sigma-Aldrich (Growth ques)	SHBS7468	31-10-2028	<ul style="list-style-type: none"> • The physical appearance of this batch was clear and colorless, no unusual smell and particles were found. • The purity of this batch is $\geq 99.8\%$ (GC), the Quantity of water is (0.1%) serves an important fixative function • During microscopy, all stages of parasites were clearly visible. Lysis of red blood cells was not seen, as well as parasitic morphology was well preserved. 	Accepted
3	Sigma-Aldrich (Kashmir Ph)	SHBR6023	N/A	<ul style="list-style-type: none"> • The physical appearance of this batch was clear and colorless, no unusual smell and particles were found. • The purity of this batch is $\geq 99.6\%$ (GC), indicating higher initial water content. 99.6% means methanol will hit a critically contaminated water threshold much faster. 	Accepted but not recommended

				<ul style="list-style-type: none"> • During microscopy, this causes the thin smear to detach or wash away. 	
--	--	--	--	---	--

Recommendations for Methanol in Malaria Microscopy:

- Thin blood smear should be completely air dry before methanol fixation.
- Allow the methanol to evaporate completely before proceeding with staining.
- Handle methanol in a well-ventilated area due to its toxicity and flammability.

iii. Results of Immersion Oil:

S.#	Manufacturer	Batch#	Expiry	Results	Accepted / Not Accepted
1	Sigma Aldrich (Masons)	BCCL6601	31-03-2027	<ul style="list-style-type: none"> • Physically it was transparent and there were no visible impurities present. • The Observed refractive index of oil was 1.516–1.517 which falls within the optimal range recommended for light microscopy this ensures proper matching with the objective lens, minimize light refraction and maximize image clarity. • The Observed density of oil was 1.025 g/cm³, which helps it remain stable and stay in place also ensuring consistent image quality throughout slide evaluation. • No crystals or air bubbles were observed in the immersion oil during microscopy examination. • A clear and sharp image was observed during microscopy under 100X magnification without any blurring. 	Accepted
2	Sigma-Aldrich (Growth quest)	BCCL6601	31-03-2027	<ul style="list-style-type: none"> • Physically it was transparent and there were no visible impurities present. 	Accepted

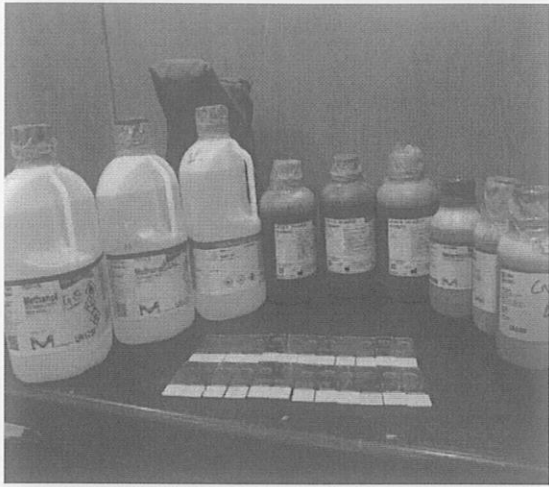
				<ul style="list-style-type: none"> • The Observed refractive index of oil was 1.516 which falls within the optimal range recommended for light microscopy this ensures proper matching with the objective lens, minimize light refraction and maximize image clarity. • The Observed density of oil was 1.025 g/cm³, which helps it remain stable and stay in place also ensuring consistent image quality throughout slide evaluation • No crystals or air bubbles were observed in the immersion oil during microscopy examination. • A clear and sharp image was observed during microscopy under 100X magnification without any blurring. 	
3	Sigma-Aldrich (Kashmir Ph)	MKCZ4505	31-08-2030	<ul style="list-style-type: none"> • It was physically transparent observed and there were no visible impurities present. • The Observed refractive index of oil was 1.515 which falls within the optimal range recommended for light microscopy this ensures proper matching with the objective lens, minimize light refraction and maximize image clarity. • The Observed density of oil was 1.080 g/cm³, which helps it remain stable and stay in place also ensuring consistent image quality throughout slide evaluation • No crystals or air bubbles were observed in the immersion oil during microscopy examination. 	Accepted

				<ul style="list-style-type: none">• A clear and sharp image was observed during microscopy under 100X magnification without any blurring.	
--	--	--	--	---	--

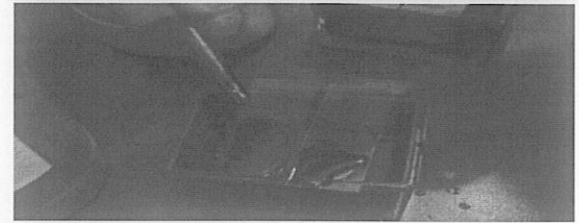
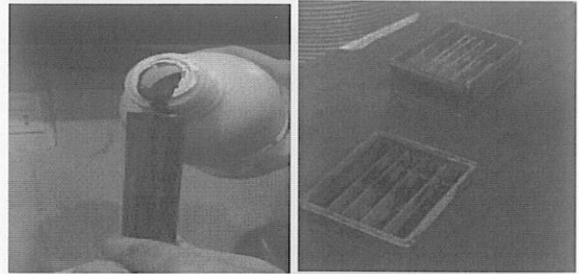
Recommendation for Oil Immersion during Malaria Microscopy.

- Store immersion oil tightly sealed, away from heat and light.
- Apply **just one drop** to the slide on the stained smear to prevent overflow on to the microscope stage or lens.
- To avoid contamination, storage bottle /container of oil immersion should be clean.

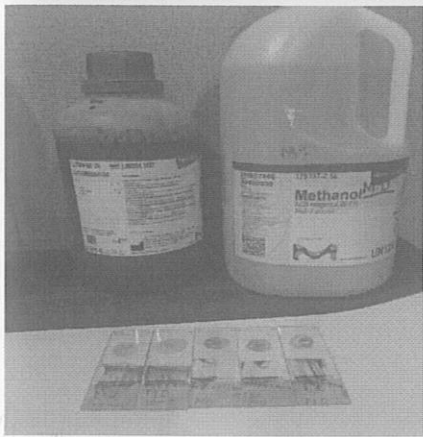
PICTURES



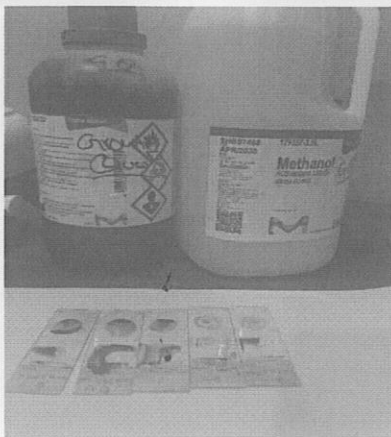
Lab Reagents for Quality Assurance



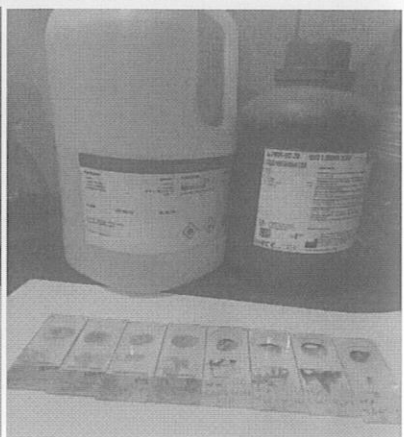
Performed staining for Quality Assurance of Giemsa Stains



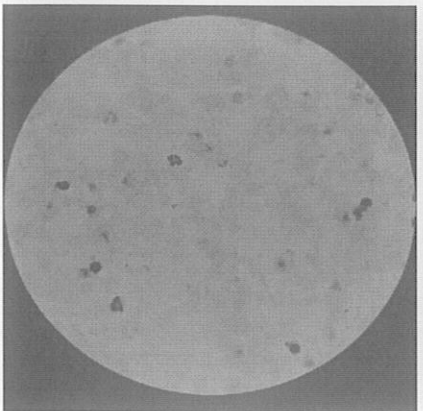
quality of staining Masons



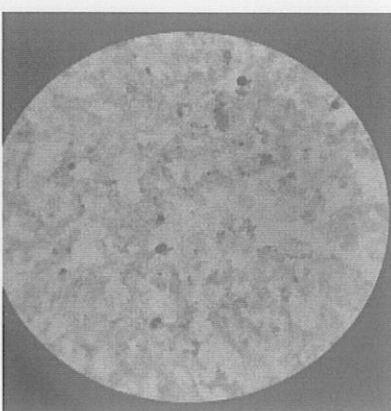
quality of staining Growth quest



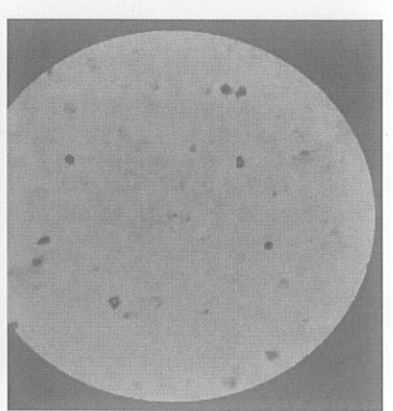
quality of staining Kasmir Ph.



Stain quality of Sigma Aldrich Masons



Stain quality of Sigma Aldrich Growth quest



Stain quality of Sigma Aldrich Kashmir Ph

Signature.....
Urooj Afreeen Abro
Acting QA Officer